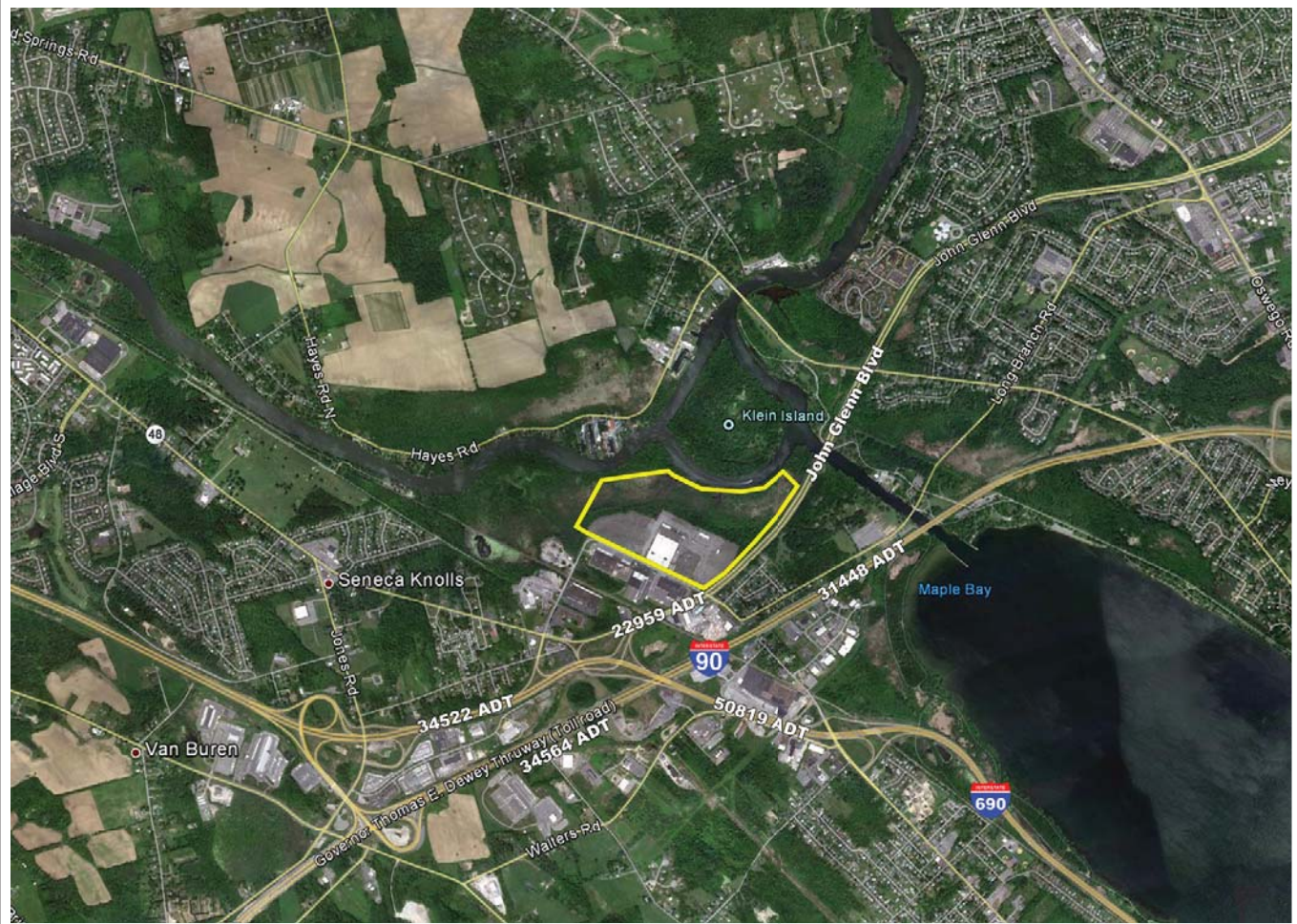


# Syracuse, New York

## Farrell Road and John Glenn Boulevard



Demographical Information:  
Primary Trade Area

Total Population 2010	75,511
Total Households 2010	33,539
Avg. HH Income	\$68,771
Median HH Income	\$59,155

- Village of Solvay Municipal Power  
\$.05 / kW
- Existing utilities
- Convenient access to Liverpool, Clay, Baldwinsville and parts of Syracuse
- +/-35 acre redevelopment

Contact:

Jim Lavelle  
The Widewaters Group  
5786 Widewaters Parkway  
PO Box 0003  
DeWitt, NY 13214

Office: (315) 445-8613  
Mobile: (315) 263-6326  
Fax: (315) 445-8570

[jlavelle@widewaters.com](mailto:jlavelle@widewaters.com)



