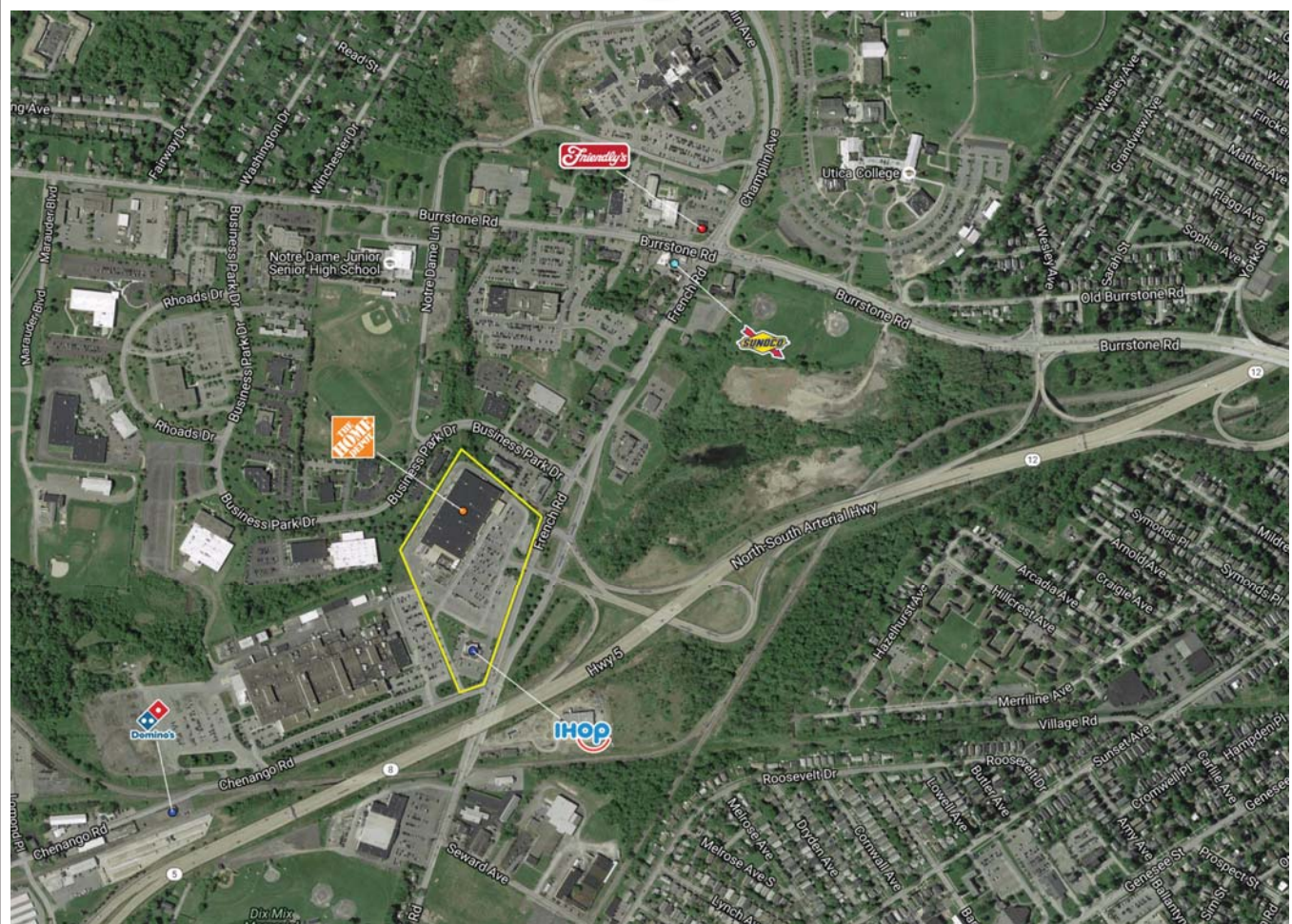


New Hartford, New York

French Road and Chenango Road along NYS Route 12

Home Depot Plaza



Demographical Information: 2015 Estimates

	<u>3-mile</u>	<u>5-mile</u>	<u>7-mile</u>
Total Population	69,192	107,769	127,642
Total Households	29,267	44,032	51,895
Avg. HH Income	\$60,173	\$60,899	\$63,756
Median HH Income	\$47,348	\$48,481	\$51,002

- Located at the intersection of NYS Routes 12, 8, and 5 on French and Chenango roads, adjacent to the Utica Business Park, and having in excess of 37,400 cars passing daily.

- This site is also, conveniently, located within walking distance of St. Luke's and Faxon Hospitals and Utica College

Contact:

Tracy Lauer
The Widewaters Group
5786 Widewaters Parkway
PO Box 0003
DeWitt, NY 13214

Office: (315) 445-8631
Mobile: (315) 382-1373
Fax: (315) 445-8570

tlauer@widewaters.com





A street map of the Utica, New York area. The map shows major roads including I-190, I-19, I-190, and I-19. A red pin is placed on French Rd, near the intersection with Burrstone Rd. Other labeled locations include Whitesboro, Yorkville, New York Mills, Utica College, and New Hartford. The Mohawk River is shown flowing through the area. Various streets are labeled, such as Main St, Court St, and Memorial Pkwy.