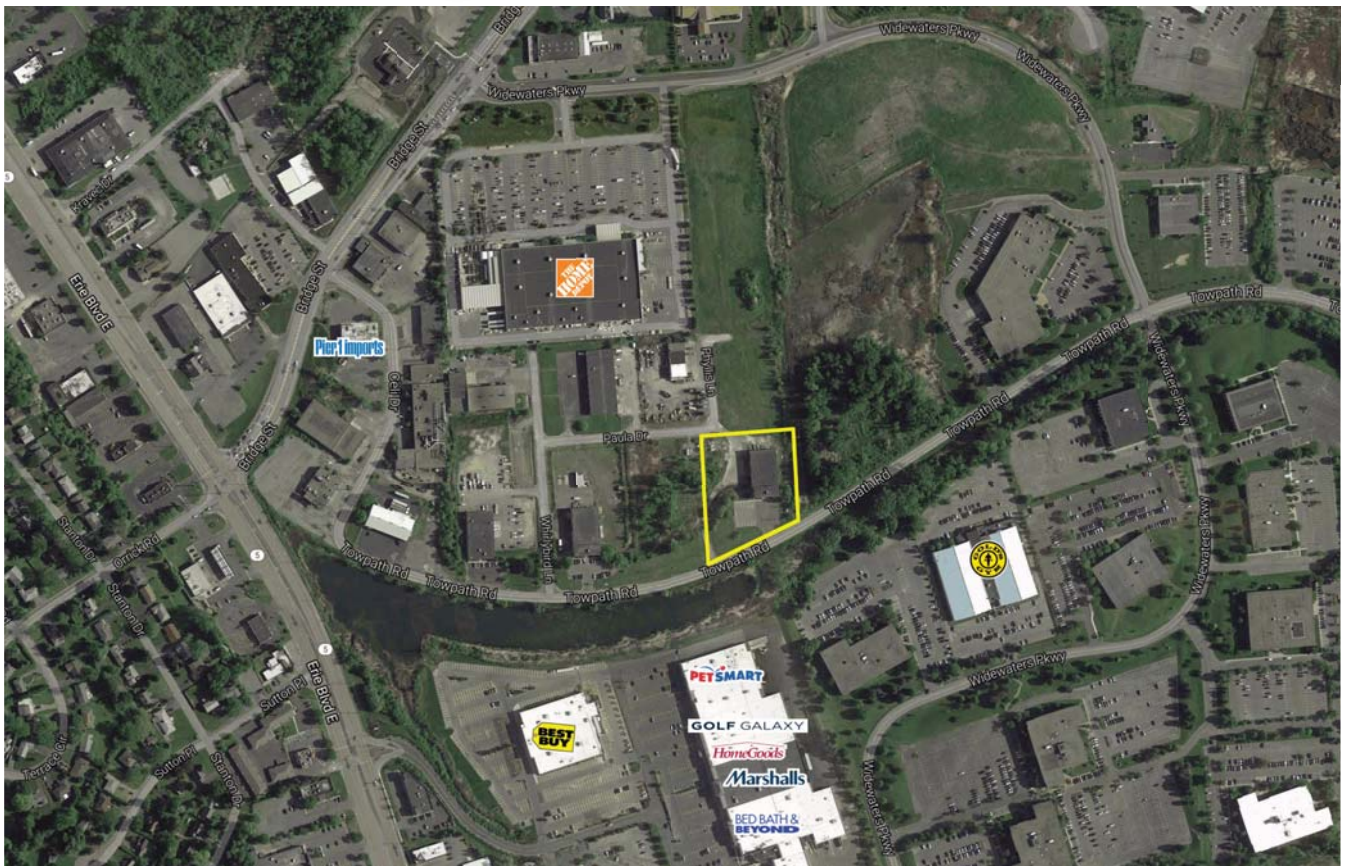


# Towpath 1

6615 Towpath Road  
Syracuse, New York



**Building Size:**

17,309 square feet  
(5,309 sq ft office  
12,000 sq ft industrial)

**Building Description:**

- Building type is Office/Industrial
- Two story, block construction
- Parking - 100 spaces

- **Immediate Occupancy**

**Location:**

- High visibility and traffic location
- Near entrance to Widewaters Office Park
- Offers easy access to Gold's Gym, restaurants, banks, post office, and services offered on Erie Boulevard



