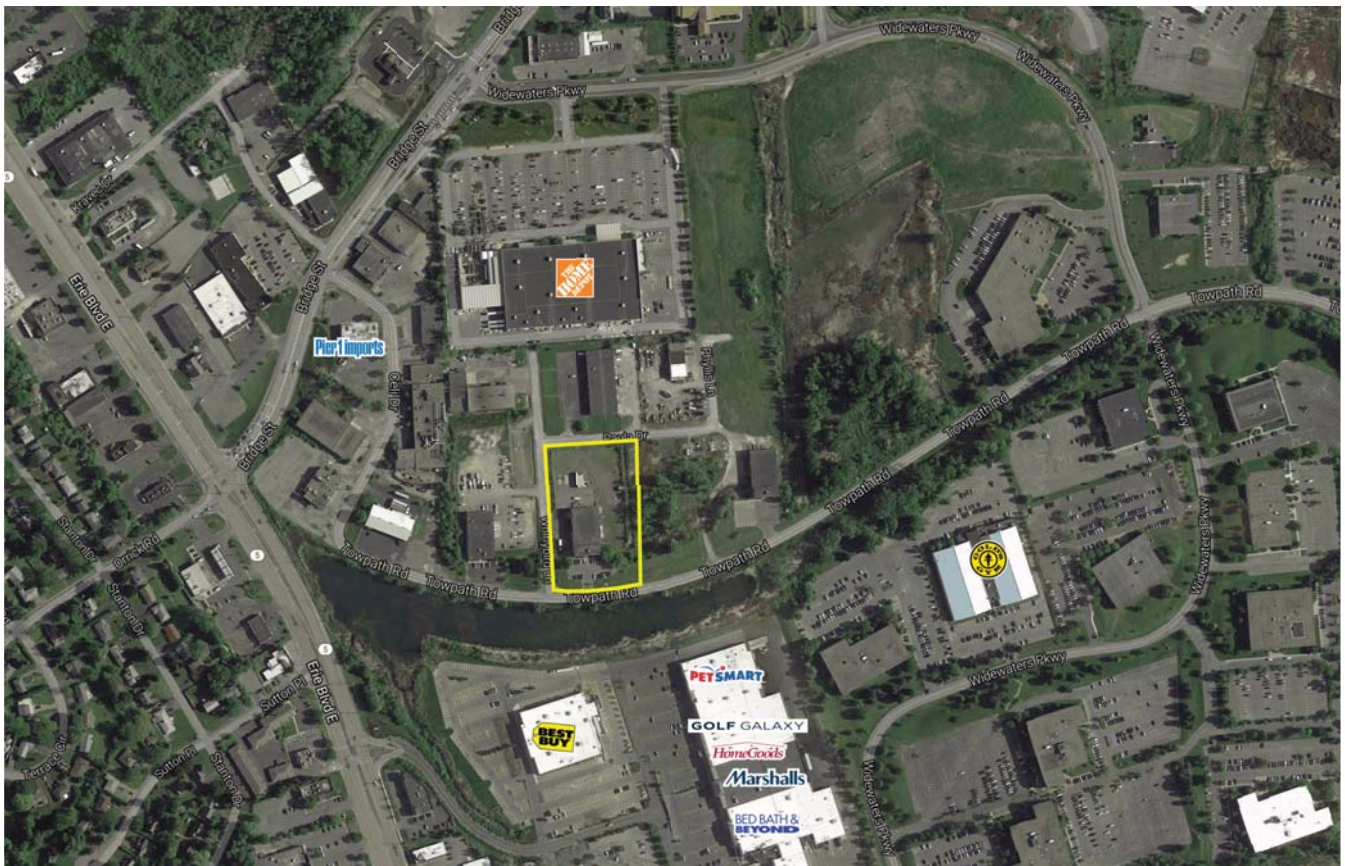


Towpath 3

6519 Towpath Road
Syracuse, New York



Building Size:

19,917 square feet
(6,580 sq ft office
13,337 sq ft industrial/warehouse)

Building Description:

- Building type is Office/Industrial/Warehouse
- Two story, block construction
- Parking - 100 spaces

• Immediate Occupancy

Location:

- High visibility and traffic location
- Near entrance to Widewaters Office Park
- Offers easy access to Gold's Gym, restaurants, banks, post office, and services offered on Erie Boulevard



