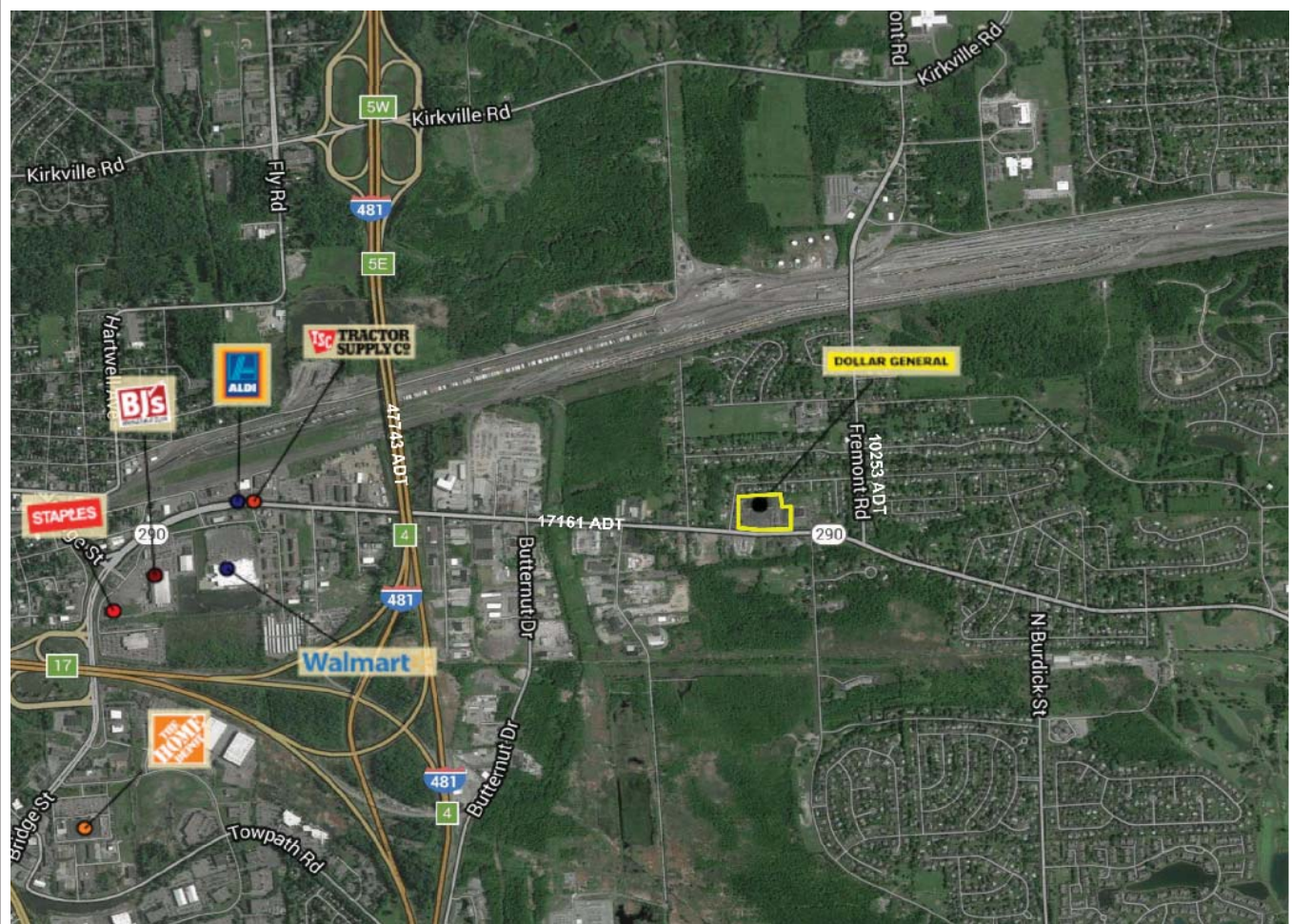


East Syracuse, New York

Fremont Plaza



Demographical Information: 2015 Estimates

| | <u>3-mile</u> | <u>5-mile</u> | <u>7-mile</u> |
|------------------|---------------|---------------|---------------|
| Total Population | 31,205 | 88,889 | 211,078 |
| Total Households | 13,387 | 38,951 | 86,910 |
| Avg. HH Income | \$75,902 | \$73,338 | \$62,314 |
| Median HH Income | \$60,552 | \$58,385 | \$48,560 |

Contact:
 Jim Lavelle
 Office: (315) 445-8613
 Mobile: (315)263-6326
 jlavelle@widewaters.com

Tracy Lauer
 Office: (315) 445-8631
 Mobile: (315) 382-1373
 tlauer@widewaters.com

- Fremont Plaza, slated for an exciting and attractive renovation, is conveniently located on Bridge Street in East Syracuse and easily accessible from I-690 Interstate, Syracuse's East-West highway and I-481 which services North-South travel.

- The project is at the gateway to the densely populated suburbs of East Syracuse, Dewitt and Kirkville and is just minutes from Onondaga County's largest office park with over 4,000 employees as well as the highly coveted Erie Blvd and Genesee Street shopping district.

- The Average Daily Traffic Count for Bridge Street exceeds 17,000 cars per day.



