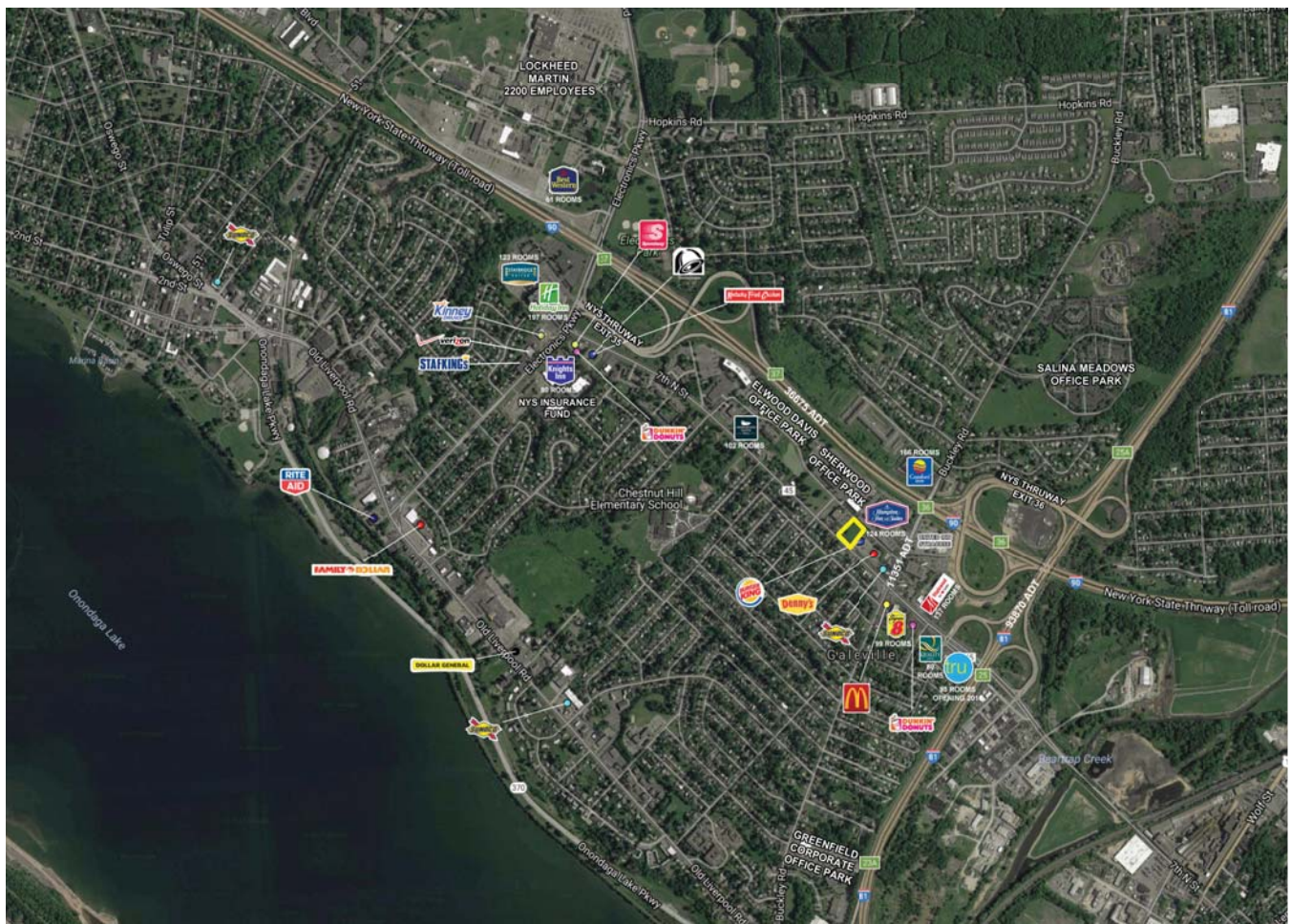


Liverpool, New York

7th North Street

1.5 Acre Parcel



Demographical Information: 2015 Estimates

	<u>1-mile</u>	<u>3-mile</u>	<u>5-mile</u>
Total Population	9,220	75,771	214,282
Total Households	4,246	33,384	91,201
Avg. HH Income	\$61,161	\$53,083	\$53,487
Median HH Income	\$51,710	\$43,831	\$43,790

- Development opportunity for ground lease or development located within one mile of the Interstate Routes 81 and 90 (NYS Thruway) at the crossroads of Central New York busiest highway. Only minutes from Downtown Syracuse and Syracuse Hancock International Airport.

- This 7th North Street opportunity enjoys proximity to a vast amount of Office Buildings and Parks including Elwood Davis Drive, Salina Meadows Office Park and new BOCES Complex that will have 500 students and 300 staff. There are several hotels with over 1,200 rooms and convenience users nearby to service the densely populated trade area of Liverpool and Salina with over 220,000 in the primary trade area.

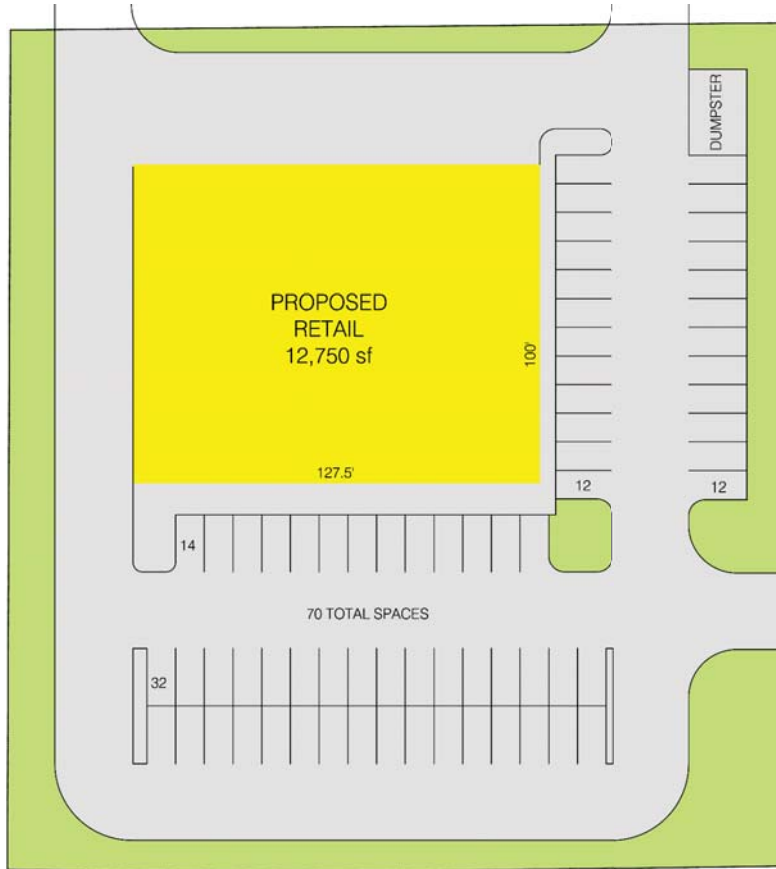
- The site offers access from 7th North Street as well as Elwood Davis Drive offering further convenience to nearby office suites as well as the new 124 room Hampton Inn currently under development slated to open in January 2017.

Contact:

James W Lavelle
Real Estate Associate Broker
Widewaters Group Inc.
Office: (315) 445-8613
Mobile: (315)263-6326
jlavelle@widewaters.com

Tracy S Lauer
Real Estate Associate Broker
Widewaters Group Inc.
Office: (315) 445-8631
Mobile: (315) 382-1373
tlauer@widewaters.com





7TH NORTH ST

