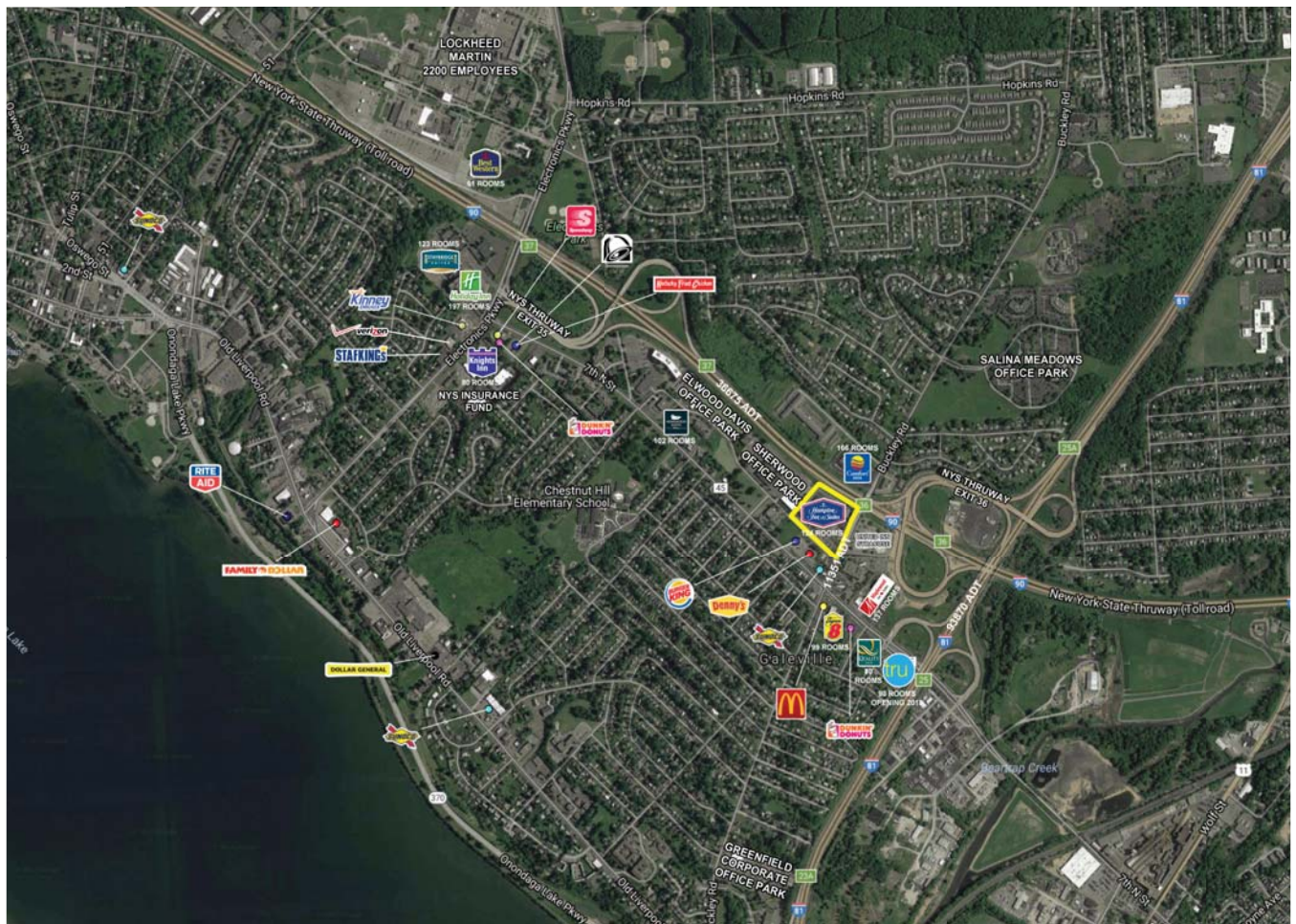


Liverpool, New York

*Buckley Road
3 Acre Parcel*



Demographical Information: 2015 Estimates

	<u>1-mile</u>	<u>3-mile</u>	<u>5-mile</u>
Total Population	8,700	76,966	216,214
Total Households	3,985	34,135	92,030
Avg. HH Income	\$61,573	\$52,796	\$53,433
Median HH Income	\$51,859	\$43,489	\$43,700

Contact:

James W Lavelle
Real Estate Associate Broker
Widewaters Group Inc.
Office: (315) 445-8613
Mobile: (315)263-6326
jlavelle@widewaters.com

Tracy S Lauer
Real Estate Associate Broker
Widewaters Group Inc.
Office: (315) 445-8631
Mobile: (315) 382-1373
tlauer@widewaters.com

- Redevelopment opportunities for ground leasing or multi-tenant development located on Buckley Road directly in front of new 124 room Hampton Inn currently under development slated to open January 2017.
- The site is within one mile of the Interstate Routes 81 and 90 (NYS Thruway) at the crossroads of Central New York busiest highway. Only minutes from Downtown Syracuse and Syracuse Hancock International Airport.
- The intersection of Buckley Rd. and 7th North Street enjoys proximity to a vast amount of Office Buildings and Parks including Elwood Davis Drive, Salina Meadows Office Park and new BOCES Comple that will have 500 students and 300 staff. There are several hotels with over 1,200 rooms and convenience users nearby to service the densely populated trade area of Liverpool and Salina with over 220,000 in the primary trade area.



