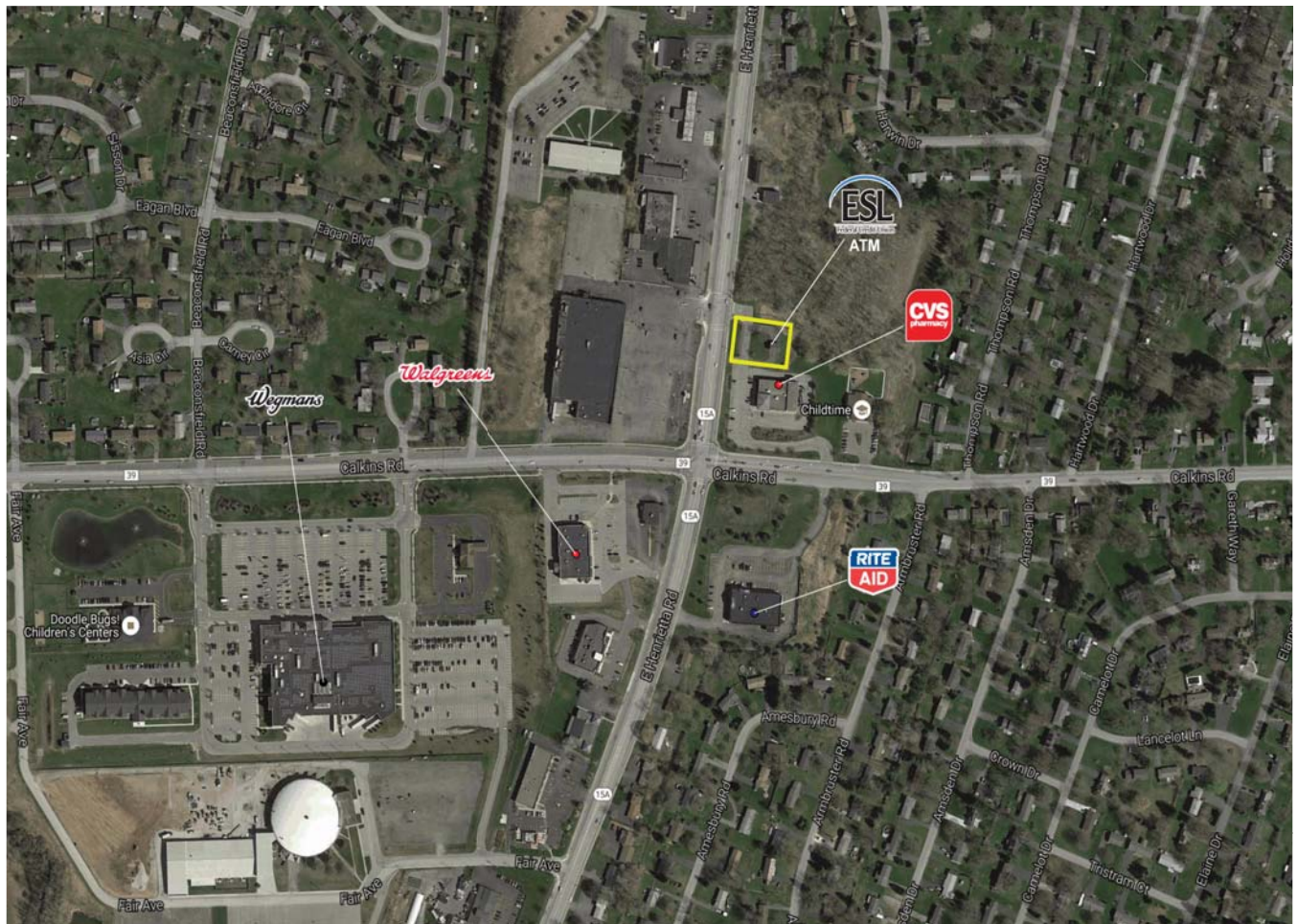


# Rochester, New York

*East Henrietta Road  
ESL Credit Union ATM*



## Demographical Information: 2016 Estimates

|                  | <u>1-mile</u> | <u>3-mile</u> | <u>5-mile</u> |
|------------------|---------------|---------------|---------------|
| Total Population | 7,665         | 36,824        | 115,847       |
| Total Households | 3,306         | 15,179        | 45,848        |
| Avg. HH Income   | \$63,663      | \$77,304      | \$86,582      |
| Median HH Income | \$55,040      | \$63,223      | \$65,348      |

### Contact:

Jim Lavelle  
Office: (315) 445-8613  
Mobile: (315) 263-6326  
jlavelle@widewaters.com

Tracy Lauer  
Office: (315) 445-8631  
Mobile: (315) 382-1373  
tlauer@widewaters.com



